



Y25 PVC Centralizer

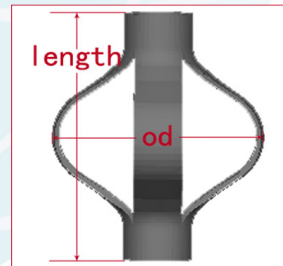
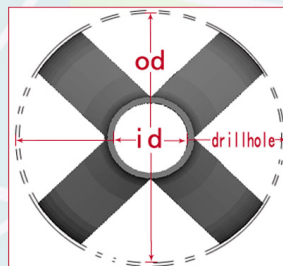
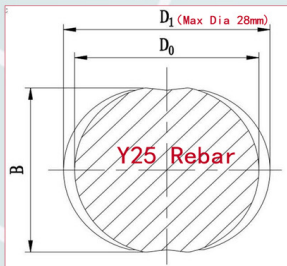
Material: U-PVC (聚氯乙炔)

Thickness: $\geq 2\text{mm}$

Standard: ASTM D1599

| Model | ID (mm) | OD (mm) | Length | Weight | Package |
|-------|---------|---------|------------|--------|---------|
| 2960 | 29 | 60 | ≥ 150 | ~60g | 200pcs |
| 2970 | 29 | 70 | ≥ 150 | ~61g | 200pcs |
| 2980 | 29 | 80 | ≥ 155 | ~62g | 200pcs |
| 2990 | 29 | 90 | ≥ 160 | ~63g | 200pcs |
| 29100 | 29 | 100 | ≥ 160 | ~65g | 200pcs |
| 29120 | 29 | 120 | ≥ 165 | ~75g | 100pcs |
| 29135 | 29 | 135 | ≥ 175 | ~88g | 100pcs |
| 29150 | 29 | 150 | ≥ 180 | ~100g | 100pcs |
| 29160 | 29 | 160 | ≥ 180 | ~105g | 100pcs |
| 29180 | 29 | 180 | ≥ 200 | ~110g | 100pcs |
| 29200 | 29 | 200 | ≥ 220 | ~120g | 100pcs |

Others size can be made by order.





Y32 PVC Centralizer

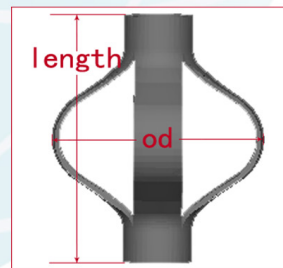
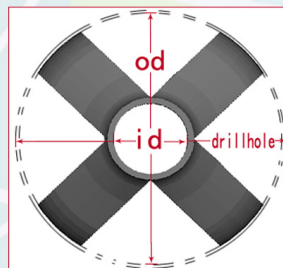
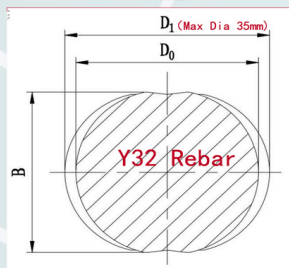
Material: U-PVC (聚氯乙烯)

Thickness: $\geq 2\text{mm}$

Standard: ASTM D1599

| Model | ID (mm) | OD (mm) | Length | Weight | Package |
|-------|---------|---------|------------|--------|---------|
| 3260 | 36 | 60 | ≥ 150 | ~70g | 200pcs |
| 3270 | 36 | 70 | ≥ 150 | ~78g | 200pcs |
| 3280 | 36 | 80 | ≥ 155 | ~85g | 200pcs |
| 3290 | 36 | 90 | ≥ 160 | ~88g | 200pcs |
| 32100 | 36 | 100 | ≥ 160 | ~90g | 200pcs |
| 32120 | 36 | 120 | ≥ 165 | ~95g | 100pcs |
| 32135 | 36 | 135 | ≥ 175 | ~98g | 100pcs |
| 32150 | 36 | 150 | ≥ 180 | ~100g | 100pcs |
| 32160 | 36 | 160 | ≥ 180 | ~110g | 100pcs |
| 32180 | 36 | 180 | ≥ 200 | ~125g | 100pcs |
| 32200 | 36 | 200 | ≥ 220 | ~135g | 100pcs |

Other size can be made by order.





Y36 PVC Centralizer

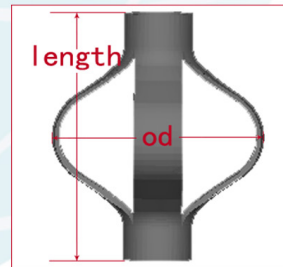
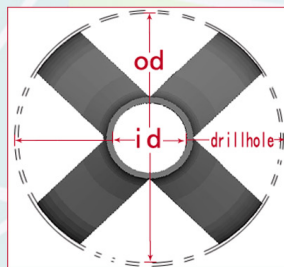
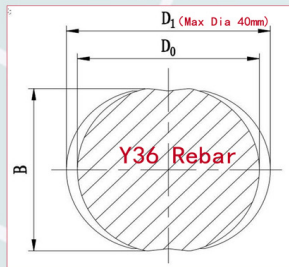
Material: U-PVC (聚氯乙烯)

Thickness: $\geq 3\text{mm}$

Standard: ASTM D1599

| Model | ID (mm) | OD (mm) | Length | Weight | Package |
|-------|---------|---------|------------|--------|---------|
| 4280 | 42 | 80 | ≥ 150 | ~110g | 100pcs |
| 4290 | 42 | 90 | ≥ 155 | ~120g | 100pcs |
| 42100 | 42 | 100 | ≥ 155 | ~130g | 100pcs |
| 42110 | 42 | 110 | ≥ 160 | ~140g | 100pcs |
| 42120 | 42 | 120 | ≥ 165 | ~150g | 50pcs |
| 42130 | 42 | 130 | ≥ 170 | ~150g | 50pcs |
| 42140 | 42 | 140 | ≥ 175 | ~160g | 50pcs |
| 42150 | 42 | 150 | ≥ 180 | ~170g | 50pcs |
| 42160 | 42 | 160 | ≥ 185 | ~180g | 50pcs |
| 42180 | 42 | 180 | ≥ 200 | ~200g | 50pcs |
| 42200 | 42 | 200 | ≥ 220 | ~220g | 50pcs |

Other sizes can be made by order.

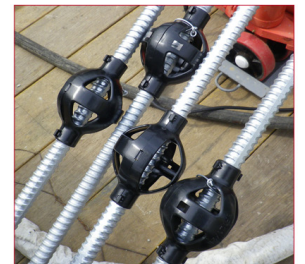
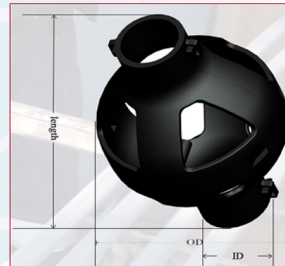
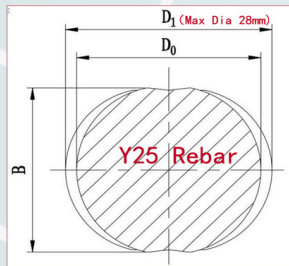


Olive shape centralizer

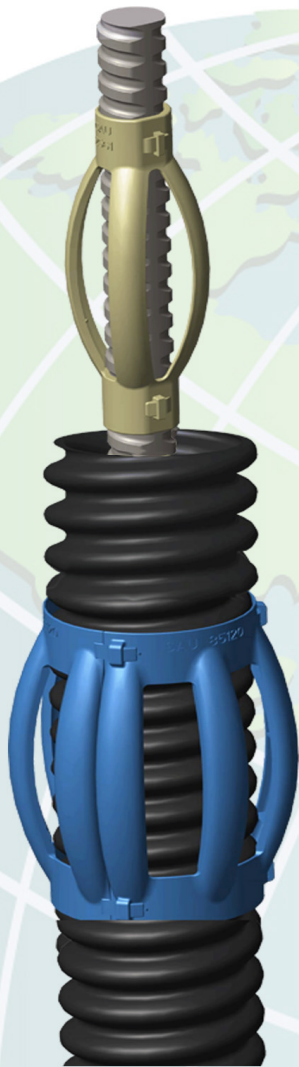


| Model | ID (mm) | OD (mm) | Length | Weight | Package |
|---------|---------|---------|--------|--------|---------|
| SF9025 | 25 | 80 | 130 | 70g | 100pcs |
| SF9032 | 32 | 80 | 130 | 70g | 100pcs |
| SF9040 | 40 | 80 | 130 | 70g | 100pcs |
| SF9028 | 25 | 90 | 150 | 75g | 100pcs |
| SF9035 | 32 | 90 | 150 | 75g | 100pcs |
| SF10040 | 40 | 90 | 140 | 75g | 100pcs |
| SF10050 | 50 | 90 | 140 | 80g | 100pcs |
| SF11040 | 40 | 100 | 140 | 90g | 100pcs |
| SF11050 | 50 | 100 | 140 | 90g | 100pcs |
| SF12129 | 29 | 120 | 175 | 120g | 50pcs |
| SF12132 | 29 | 120 | 175 | 120g | 50pcs |
| CJ12129 | 29 | 120 | 200 | 120g | 50pcs |

Material: HDPE (高密度聚乙烯)

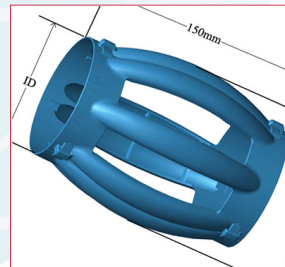
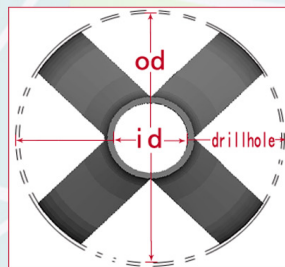
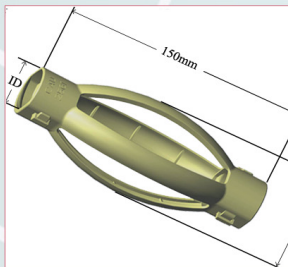
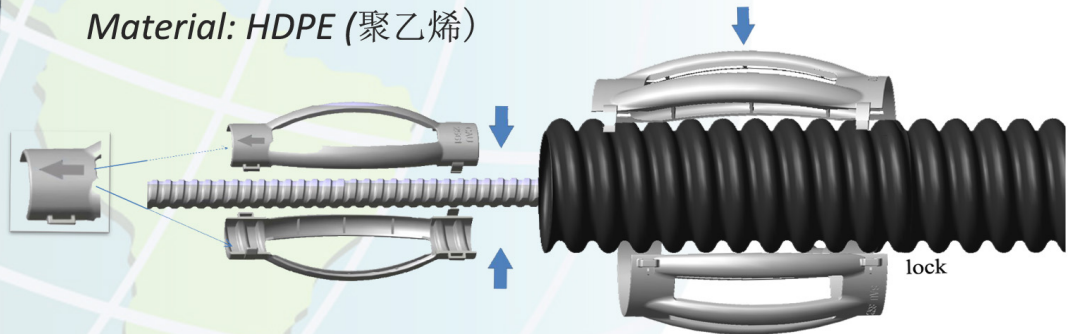


PTG Centralizer



| Model | ID | OD | Length | Weight | Package |
|-----------|-----|-----|--------|--------|---------|
| CAU2550 | 25 | 50 | 150 | ~60g | 200pcs |
| CAU2565 | 25 | 65 | 150 | ~61g | 200pcs |
| CAU2580 | 25 | 80 | 150 | ~62g | 200pcs |
| CAU3265 | 32 | 65 | 150 | ~63g | 200pcs |
| CAU3280 | 32 | 80 | 150 | ~65g | 200pcs |
| CAU32100 | 32 | 100 | 150 | ~75g | 100pcs |
| SAU65100 | 65 | 100 | 150 | ~88g | 100pcs |
| SAU85120 | 85 | 120 | 150 | ~100g | 100pcs |
| SAU100150 | 100 | 150 | 150 | ~105g | 100pcs |

Material: HDPE (聚乙烯)



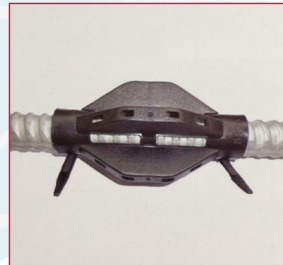
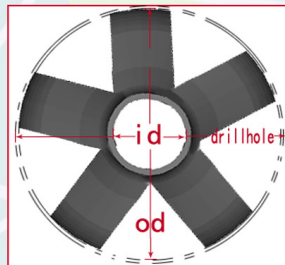
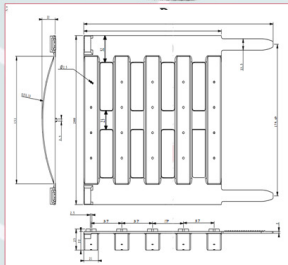


Wrap-around type Centralizer



| Model | ID (mm) | OD (mm) | Length | Weight | Package |
|-------|---------|---------|--------|--------|---------|
| 2550 | 25 | 50 | 150 | ~60g | 200pcs |
| 2565 | 25 | 65 | 150 | ~61g | 200pcs |
| 2570 | 25 | 70 | 150 | ~62g | 200pcs |
| 2580 | 25 | 80 | 150 | ~63g | 200pcs |
| 25100 | 25 | 100 | 150 | ~65g | 200pcs |
| 3270 | 32 | 70 | 150 | ~65g | 200pcs |
| 3280 | 32 | 80 | 150 | ~65g | 200pcs |
| 3290 | 32 | 90 | 150 | ~65g | 200pcs |
| 32100 | 32 | 100 | 150 | ~75g | 200pcs |
| 4070 | 40 | 70 | 150 | ~75g | 200pcs |
| 4080 | 40 | 80 | 150 | ~75g | 200pcs |

Material: HDPE (高密度聚乙烯)



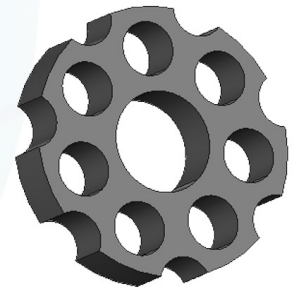


Strand centralizer



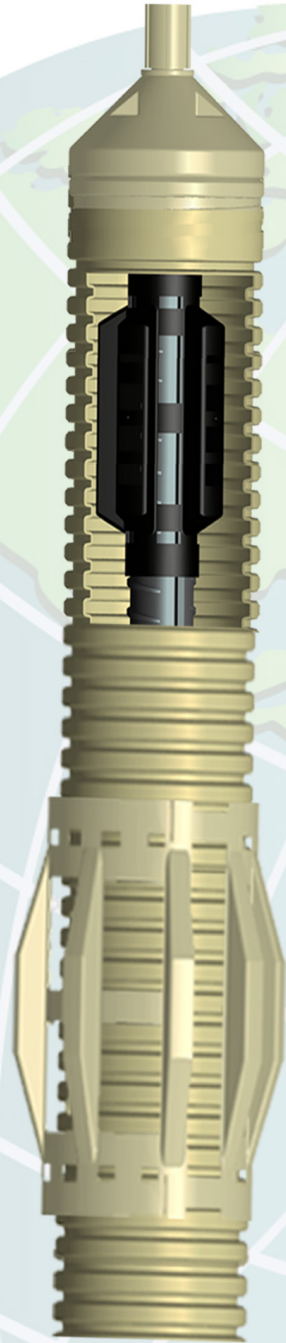
| Model | ID (mm) | OD (mm) | thick | Length | pack |
|-------|---------|---------|-------|-----------|--------|
| SC4 | 50 | 65 | ≥2mm | 150m/coil | 120g/m |
| SC5 | 65 | 85 | ≥2mm | 150m/coil | 120g/m |

Material: HDPE (高密度聚乙烯)





SF Strap Ex-Centralizer

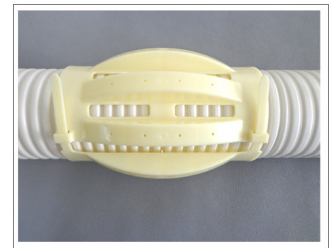
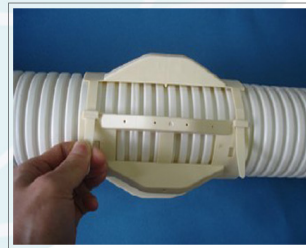
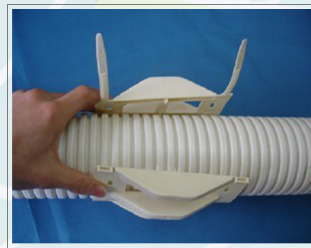


| Model | ID (mm) | OD (mm) | Length | Weight | Package |
|--------|---------|---------|--------|--------|---------|
| 65100 | 65 | 100 | 150mm | ~60g | 100pcs |
| 80120 | 80 | 120 | 200mm | ~70g | 100pcs |
| 90120 | 90 | 120 | 200mm | ~70g | 100pcs |
| 100150 | 100 | 150 | 200mm | ~100g | 100pcs |
| 100180 | 100 | 180 | 200mm | ~120g | 100pcs |
| 110150 | 110 | 150 | 200mm | ~100g | 100pcs |
| 110180 | 110 | 180 | 200mm | ~100g | 100pcs |

Material: HDPE (聚乙烯)

Thickness: ≥2mm

Others size can be made by order.





Corrugated Sheathing for DCP anchor



| Model | ID (mm) | OD (mm) | thick | Length | Weight |
|----------|---------|---------|-------|-----------|---------|
| CS5065 | 50 | 65 | ≥2mm | 150m/coil | 600g/m |
| CS6585 | 65 | 85 | ≥2mm | 150m/coil | 750g/m |
| CS80100 | 80 | 100 | ≥2mm | 120m/coil | 900g/m |
| CS100125 | 100 | 125 | ≥2mm | 100m/coil | 1100g/m |

Material: HDPE (高密度聚乙烯)

ID:29mm/OD:121mm

Standard: ASTM D1599

